



## dementia



Do you live with or know  
someone who has dementia?



Dementia is caused by  
changes in the brain.



Sometimes people with  
dementia forget where they live.

They can get lost.



When people do get lost,  
the police want to help  
find them quickly.



We can all use the Herbert Protocol to help the police find missing people with dementia.



The Herbert Protocol is a form.

The form tells the police all about the person with dementia.



The form can be used for people with dementia who:

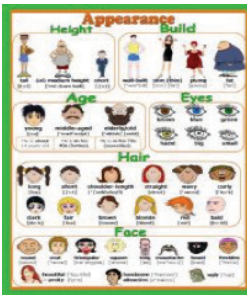
- Live in a care home, or
- Live in their own home, or
- Live with family



Someone who cares for the person with dementia can fill in the form.



The form asks questions about the person.  
Things like...



What the person looks like.



Favourite places where the person likes to go.

**medication  
information**



If they take any medication.



A photograph of them.



If the person goes missing this information will help the police to find them.



You can find the form on our website:

[www.northants.police.uk/herbertprotocol](http://www.northants.police.uk/herbertprotocol)



Deaf or speech impaired?

Access SignVideo at  
[www.northants.police.uk/contact](http://www.northants.police.uk/contact)

Contact us using Text Relay  
on 18001 01604 432521